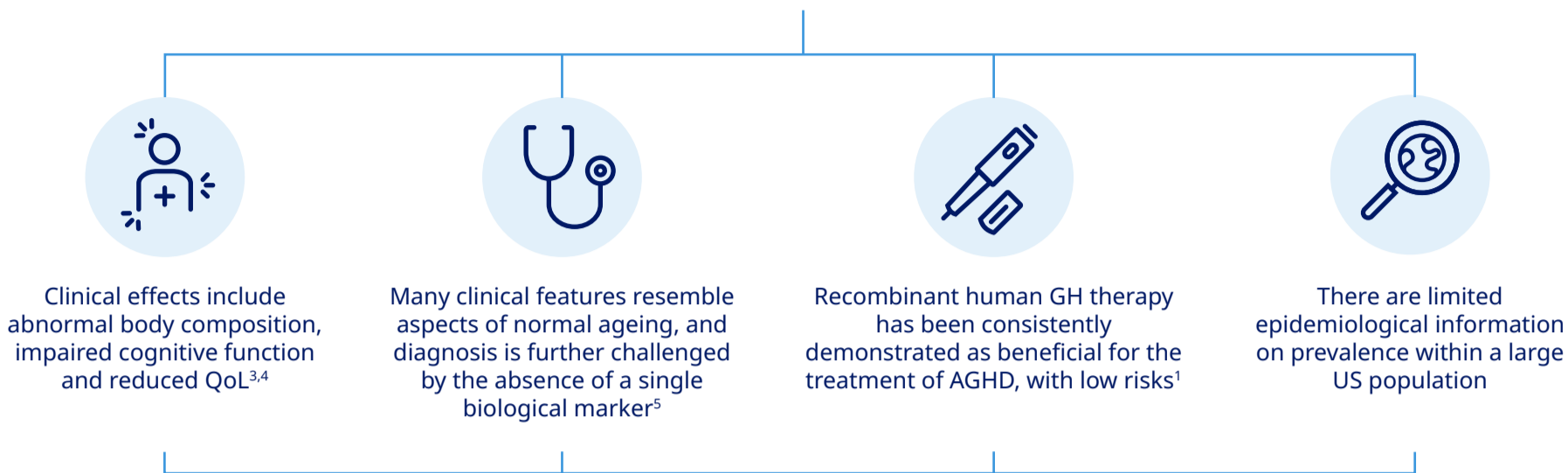


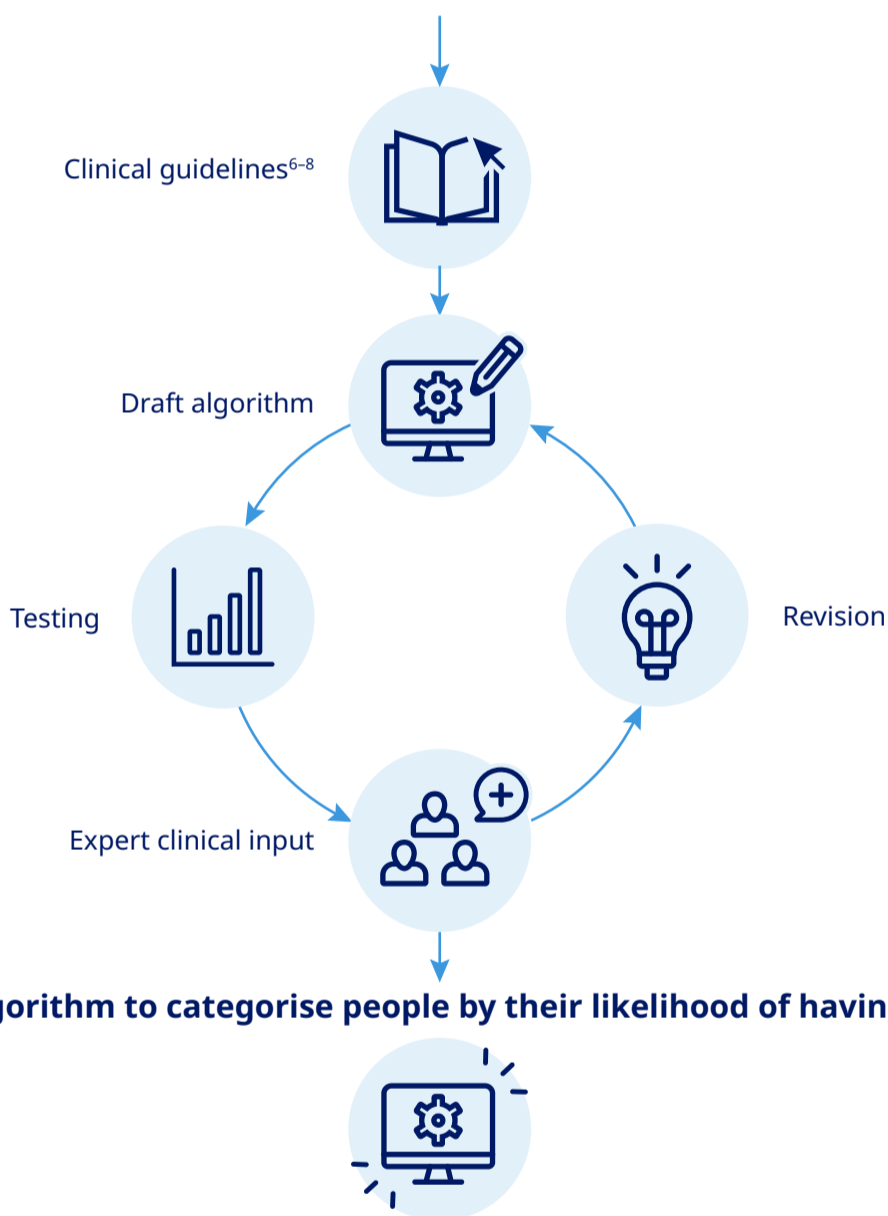


What is AGHD?

A rare endocrine disease, characterised by the deficiency of GH that can persist from childhood into adulthood or be newly acquired^{1,2}

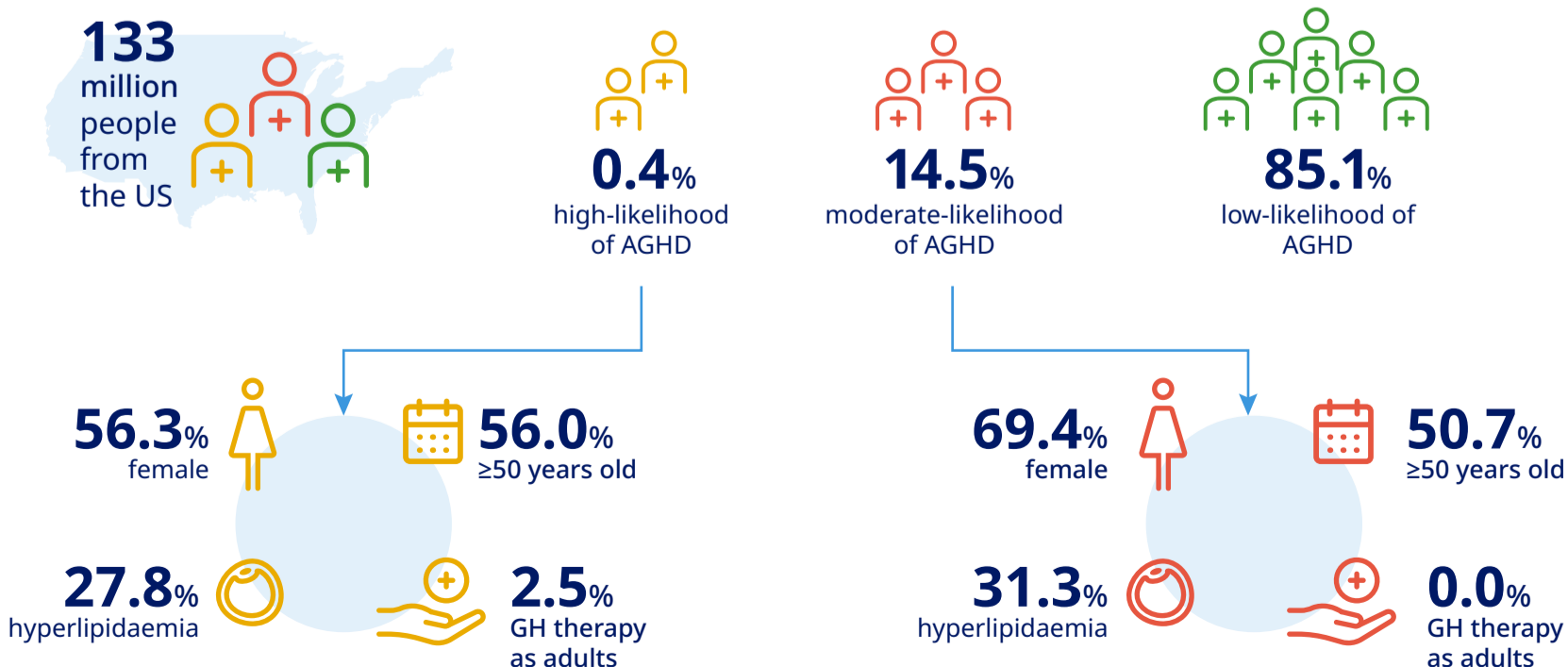


Iterative algorithm development process



Final algorithm to categorise people by their likelihood of having AGHD

Application of the final algorithm to an administrative healthcare database



References 1. Yuen *et al. Endocr Pract* 2019;25:1191–232; 2. Molitch *et al. J Clin Endocrinol Metab* 2011;96:1587–609; 3. Melmed. *N Engl J Med* 2019;380:2551–62; 4. Gupta. *Indian J Endocrinol Metab* 2011; 15 Suppl 3: S197–S202; 5. Reed *et al. Front Endocrinol* 2013;4:64; 6. Boguszewski. *Rev Argent Endocrinol Metab* 2010;47:30–8; 7. Giustina *et al. J Endocrinol Invest* 2008;31:820–38; 8. Ho. *Eur J Endocrinol* 2007;157:695–700.

AGHD, adult growth hormone deficiency; GH, growth hormone; QoL, quality of life
Date of Preparation: November 2020. Novo Nordisk Health Care AG, Zurich, Switzerland.
Data presented at Virtual ISPOR Europe 2020.