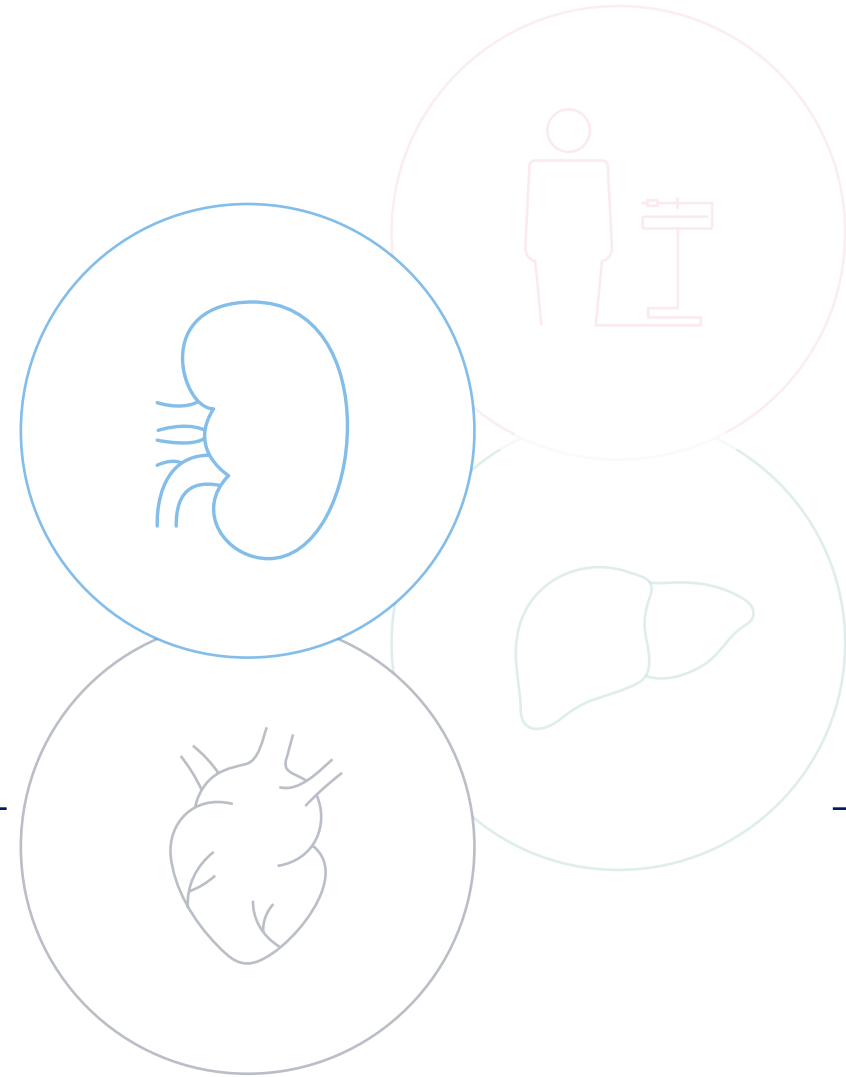


# Introduction to cardiometabolic diseases

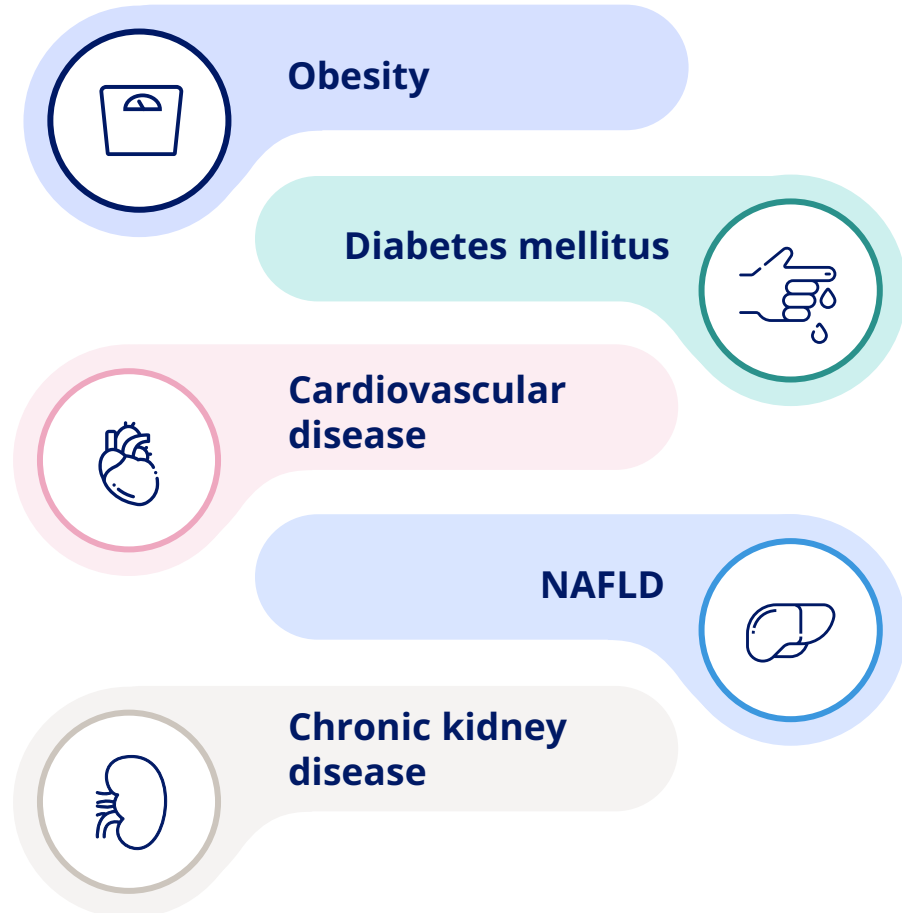
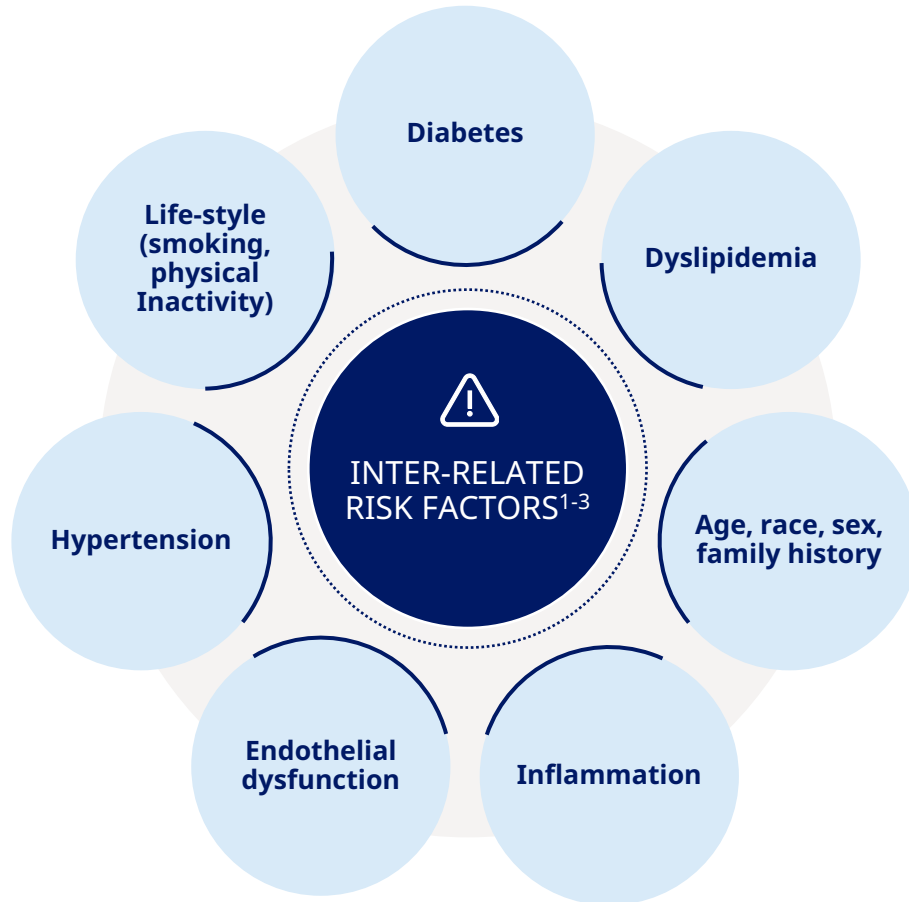
CV and Renal

---



# Cardiometabolic diseases

Key cardiometabolic diseases and some inter-related risk factors



*This deck provides an overview of certain investigational compounds being studied in clinical development programs. Efficacy and safety have not been established for these investigational compounds. There is no guarantee that any of these compounds will become commercially available for the use(s) under investigation.*

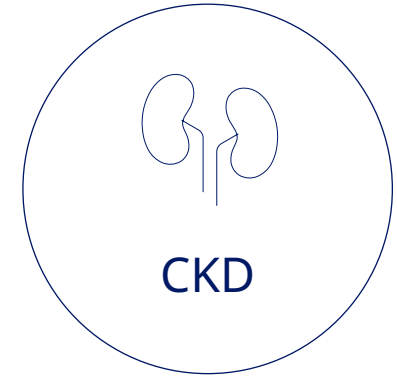
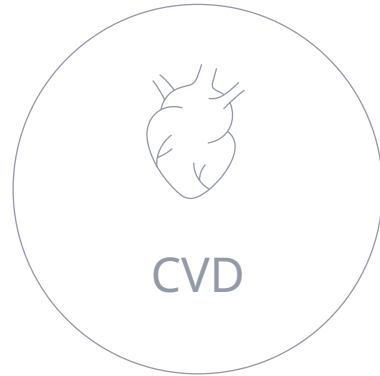
NAFLD, non-alcoholic fatty liver disease

1. Cannon CP. Clin Cornerstone. 2007;8(3):11-28; 2..Uy AB et al. J ASEAN Fed Endocr Soc. 2021;36(1):12-24; 3. Kahn R. et al. Circulation. 2007;115(13):1806-1811; 4. <https://www.acc.org/tools-and-practice-support/quality-programs/cardiometabolic-health-alliance>



# Despite Current Treatments, Cardiometabolic Diseases Represent a Considerable Burden

Serious chronic diseases are often associated with diabetes and obesity



## Association

- In people with diabetes, 50% of deaths are due to CVD<sup>1</sup>
- >66% of obesity-related deaths are due to CVD<sup>2</sup>

- 80% of people with NASH live with obesity and 30-40% have diabetes<sup>4</sup>

- 40% of people with diabetes have diabetic nephropathy<sup>6</sup>
- Up to 54% of people with CKD have obesity<sup>7</sup>

## US Prevalence

121.5 million<sup>3</sup>

>6.4 million<sup>5</sup>

37 million<sup>8</sup>

*This deck provides an overview of certain investigational compounds being studied in clinical development programs. Efficacy and safety have not been established for these investigational compounds. There is no guarantee that any of these compounds will become commercially available for the use(s) under investigation.*

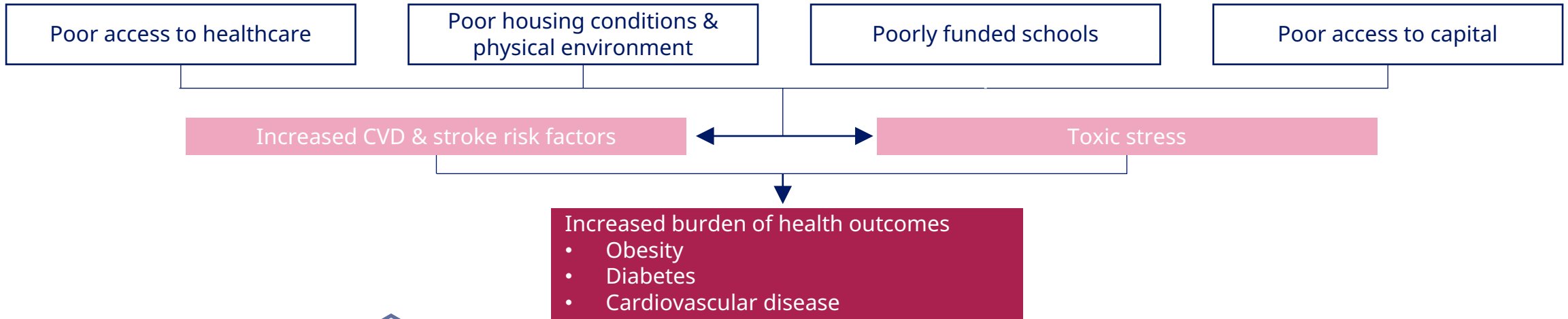
CKD: Chronic kidney disease; CVD: Cardiovascular disease; NASH: Non-alcoholic Steatohepatitis.

1. Einarson et al. *Cardiovasc Diabetol* (2018) 17:83; 2. Powell-Wiley. 2021. *Circulation*. 143(21) e984-e1010; 3. Benjamin et al. *Circulation* 2019 Mar; 139(10), e56-e528; 4. Cusi, K. *Liver International*. 2020;40(Suppl 1):82-88; 5. Younossi et al *Diabetes Care* 2020;43:283-289; 6. Gross et al. *Diabetes Care* 2005 Jan, 28(1): 164-176; 7. Evangelista et al. 2018. *PLoS ONE* 13 (2): e0193559; 8. CDC 2021 <https://www.cdc.gov/kidneydisease/publications-resources/ckd-national-facts.html> Accessed 6 Oct 2021



# Social Determinants Affect Cardiometabolic Risk

Racial/ethnic minorities, the socioeconomically disadvantaged, and the underinsured **are most affected by persisting health disparities in US healthcare<sup>1</sup>**



- Combining initiatives
- Ongoing workforce training
- Targeted and culturally appropriate strategies
- Technology Infrastructure to capture and connect required data

*This deck provides an overview of certain investigational compounds being studied in clinical development programs. Efficacy and safety have not been established for these investigational compounds. There is no guarantee that any of these compounds will become commercially available for the use(s) under Investigation.*

*CVD, cardiovascular disease*

*1. Churchwell et al. Circulation 2020. 142; e1-e15; 2. Meneghini LF et al. Diabetes Spectr. 2019;32:303-11.*





ново нордиск®